

# 1 to 6 HF Balun (300, 450, 600-Ohm)

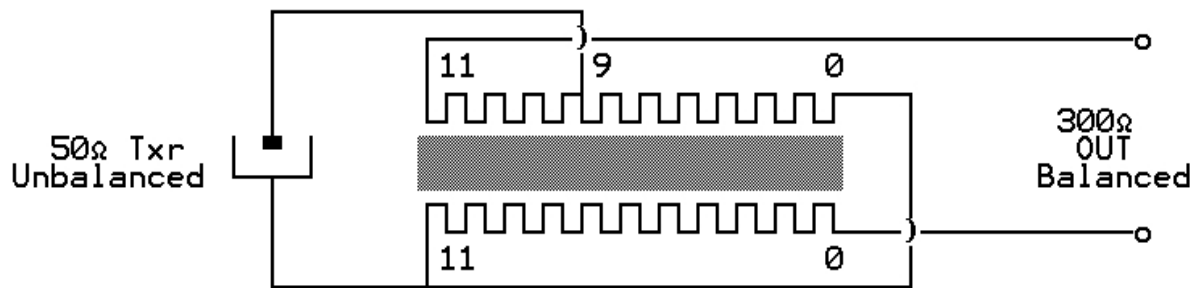
From PD2HFE

(Updated Mar 05)

Hello to all ham folk's, for those who want to build a 1:6 balun for the hf frequencies, here is a schematic diagram.....:

(Redrawn & turns ratio recalculated by G8MNY)

9 turns = 50-Ohm, 22 turns = 300-Ohm (298 Ohm) Balanced



11 wdg bifilar on Amidon T 200-2 TOROID CORE

best 73's from Harald From: PD2HFE@PI8HGL.#ZH1.NLD.EU

For 450-Ohm (9:1 Z) use 8 turns tap for 50 Ohm Tx, & 24 turns for the balanced feed.

For 600-Ohm (12:1 Z) use 8 turns tap for 50 Ohm Tx, & 28 turns for the balanced feed.

Make sure the windings are in phase & connected correctly.

73 De John, G8MNY