



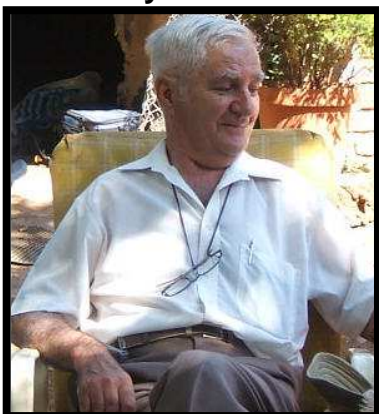
SHACKNEWS

HIGHVELD AMATEUR RADIO CLUB

JUNE 2012

COMMUNICATION IS THE NAME OF THE GAME

Silent Key



Eugene "Gene" Marais, **ZS6TA**, became a silent key on Wednesday 30 May. He was a longstanding member of the SARL and the Highveld Amateur Radio Club. He is survived by a son and two daughters, nephew Chris De Beer, **ZS6RI**, and grandson, Craig Marais, **ZR6CM**.

Our thoughts go out to Doug and Merle on the loss of their son Neal on the 12 June 2012

ZS6HVB Meeting There was no meeting this month. Next meeting will take place on the 21 July.

ZS6SSC Social Club The meeting was held at the home of Berridge and Sandra on the 16 June 2012. A reasonable turnout of members were present. Thanks to those who brought additional eates. The men spent a little time in the shack looking at Google Earth and GPS units (see next page)

Other items of news and interest

The SARL presented the Roadmap to regulatory reform to ICASA at the quarterly liaison meeting held recently. It was briefly discussed and agreed to set up a working group to consider the various aspects tabled in the document.

The roadmap deals with the:
Corrections to the current regulations,
Operating privileges for visitors from SADC countries,
Quick access to 600 kHz,
Amateur allocation at 5 MHz,
Expansion of the 160 metre band and
Increased output power limits.

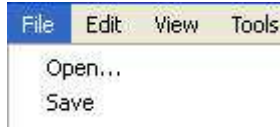
A copy of the SARL proposal to ICASA is available at www.sarl.org.za.

Parts were readout during a recent club bulletin

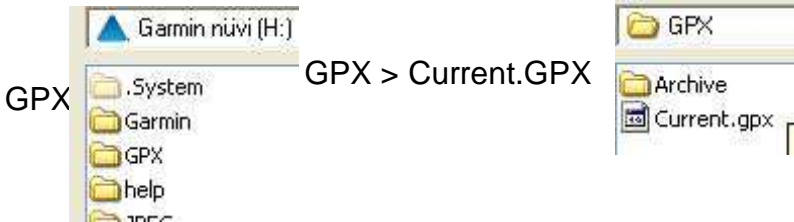
Google Earth and your Garmin

This was demonstrated at the SSC meeting at my house on Saturday. It works with the Nuvi 1410 and 500 Garmin GPS units. Limited display on a Nuvi200. It should work with other makes as well.

- 1- Connect GPS device to a PC and ensure they are communicating.
- 2- Open Google Earth (latest seems to be 6.2)
- 3- In Google Earth goto File >Open>



Garmin Nuvi
(In this example)



GPX > Current.GPX

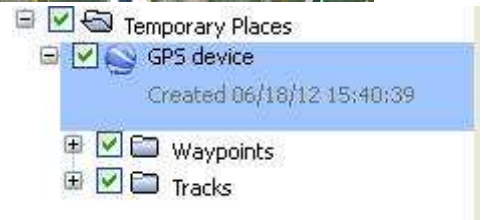
Files of type: Gps [*.gpx *.loc *.mps *.gdb *.tcx *.nmea *.log] double click on it

Goto file type:

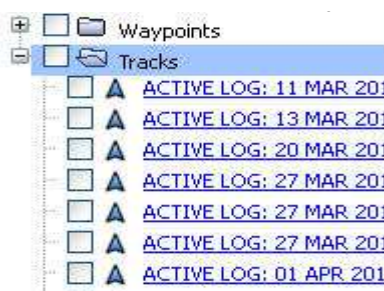
- 4-- OK on GPS data Import (leave 1 & 3 checked)
- 5- Show



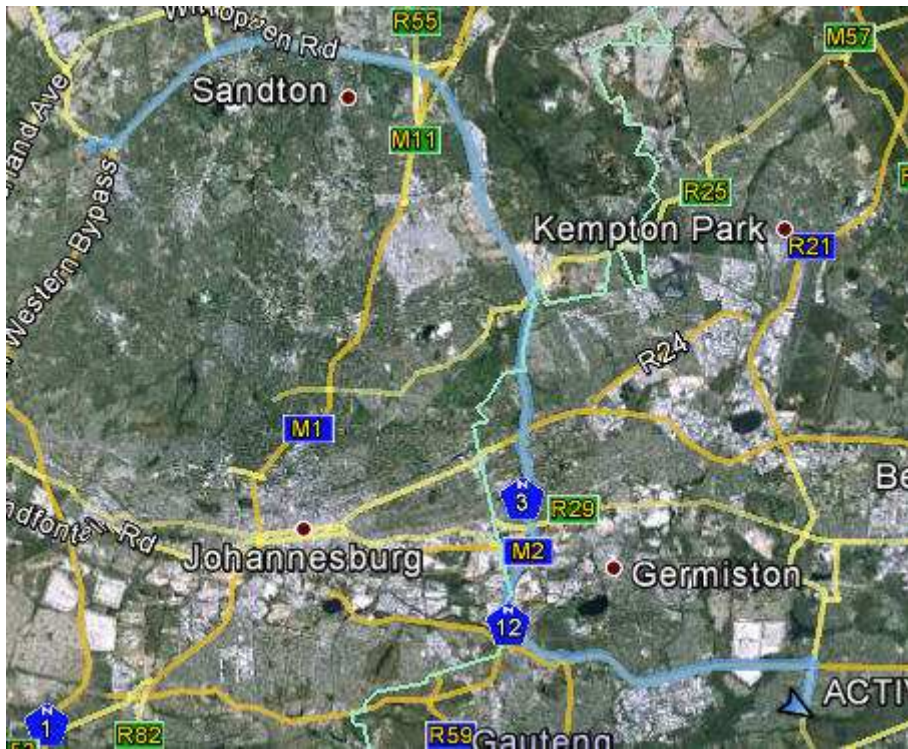
- 6- Open up on left panel



- 7- Waypoints and Tracks shown. Unchecking Waypoints removes all the blue lines.
- 8- Open Tracks.



the display and



10- If you right click on the blue track and click on "Show elevation profile" you should see below

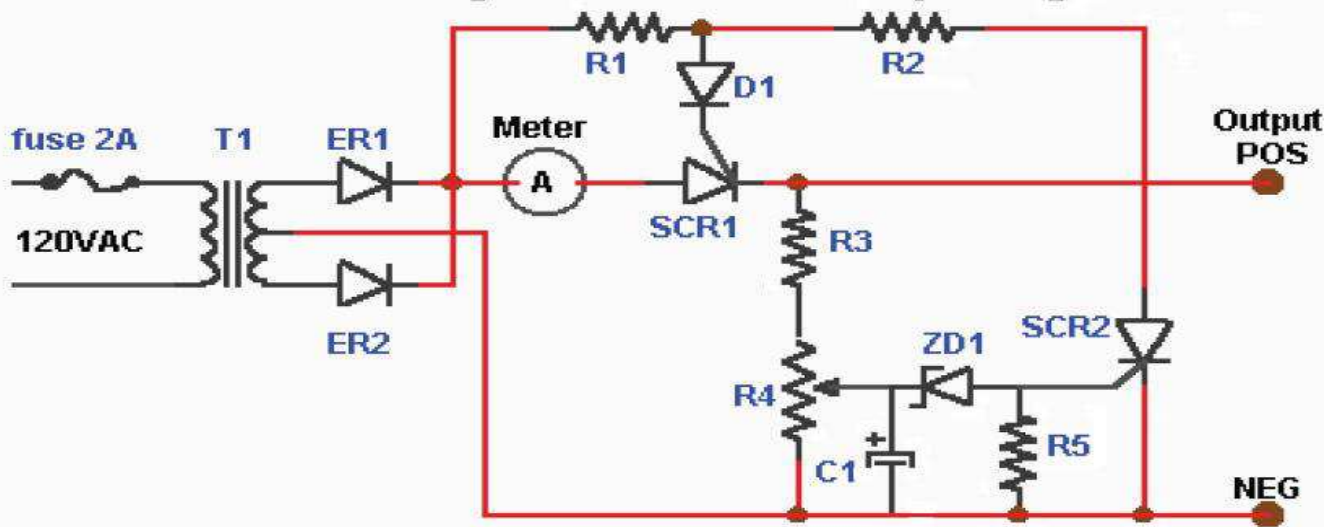


11- Moving the vertical cursor moves the red arrow. Shows altitude and speed at any given time.

I hope this explanation makes sense Ed.



High Current 12V Battery Charger



M = Current meter 1-10ADC (optional)
D1 = Diode .750mA/200V
ZD1 = Zener Diode 8.2V/1W
C1 = Capacitor 100 mfd @ 25V
T1 = Center tap 12V/10A(min)
ER1,2 = Rectifier Diodes 15A,200V

R1,R2 = 27 ohms / 5W
R3 = 47 ohms 1W
R4 = 500 ohms / 2W
R5 = 100 ohms @ 1/2 W
SCR1 = 20 A @ 50 V
SCR2 = 2 A @ 50 V

Adjust R4 using a fully charged battery so that the charging just ceases. Automatically start charging when battery voltage drops below R4 setting and stops when battery is fully charged.

CLUB INFORMATION

Postal address PO Box 19937 Sunward Park 1470

Website <http://www.zs6hvb.za.net>

Back Issues of Shacknews available on the club website

e-mail zs6hvb@zs6hvb.za.net

Repeater 145.1875 MHz input - 145.7875 MHz output

Linked to 70 cm - 438.850 Mhz (Sunday bulletins)

Bulletins Sunday morning - 145.7875 MHz & 7062 KHz @ 08h45.
 Relay - 80M - 3662KHz

Monthly meeting venue

Germiston Methodist Church
 Room at back of the offices
 Lady Duncan Rd
 Germiston

3rd Saturday of the month at 14:30

Committee

Chairman	Ton van Dijk	ZS6ANA	011-432-5494
Secretary/Treasurer	Berridge Emmett	ZS6BFL	011-893-1291
Repeater	Ton van Dijk	ZS6ANA	011-432-5494
Shacknews Editor	Berridge Emmett	ZS6BFL	011-893-1291
Shacknews Printing	Harry Lautenbach	ZS6LT	011-888-5362
Webmaster	Yvonne van Dijk	ZR6TBL	011-432-5494
Assistant Webmaster	Marianne Treyvellan	ZR6JMT	079-519-8808

Club bank details

First National Bank - Current Account 62116557309. Branch Code for EFT 250655
 Branch Code 201209 - Sunward Park